



# FOREST LANDSCAPE RESTORATION IN AFRICA

Together, we can restore forest landscapes on an unprecedented scale for the benefit of people and nature



## Environmental Conservation and Restoration agenda:

### The Bonn Challenge

Dr. Severin Kalonga, WWF Lead,  
Forest Landscape Restoration in Africa program  
Tel: +255 715 432 375  
Email: [skalonga@wwftz.org](mailto:skalonga@wwftz.org)

12th July 2022



# FOREST LANDSCAPE RESTORATION IN AFRICA

Together, we can restore forest landscapes on an unprecedented scale for the benefit of people and nature

## AMECEA : ENVIRONMENTAL IMPACT ON INTEGRAL HUMAN DEVELOPMENT

**+100**

WWF is active in over 100 countries, on 5 continents

**+5,000**

WWF has over 5,000 staff worldwide

**1961**

WWF was founded in 1961

**+5M**

WWF has over 5 million supporters



©

®



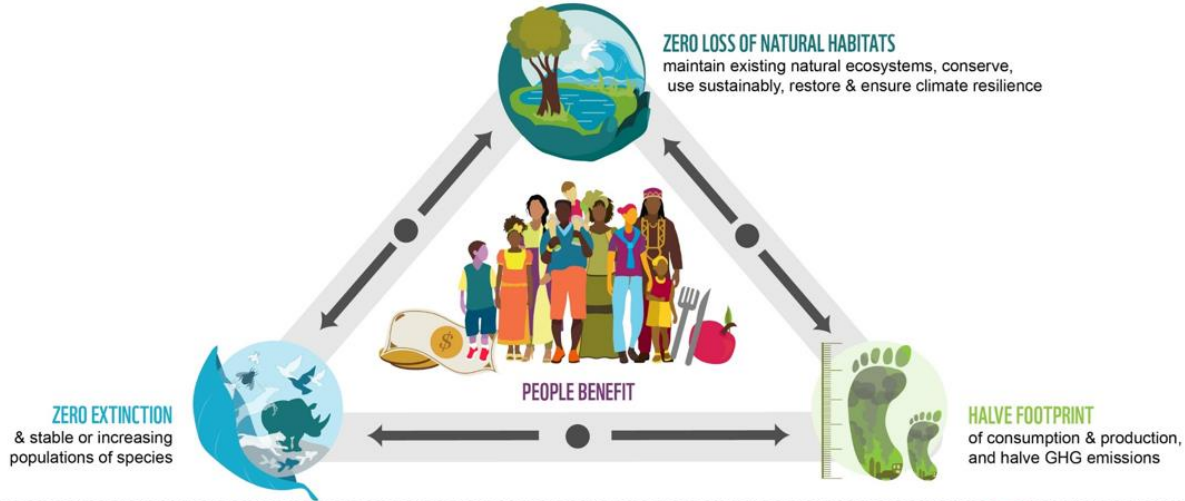
# FOREST LANDSCAPE RESTORATION IN AFRICA

Together, we can restore forest landscapes on an unprecedented scale for the benefit of people and nature

## AMECEA : ENVIRONMENTAL IMPACT ON INTEGRAL HUMAN DEVELOPMENT



BY 2030, WE PROTECT AND RESTORE NATURE FOR THE BENEFIT OF PEOPLE AND THE PLANET



**BY 2030**

*We protect and restore nature for the benefit of people and the planet.*

**WWF Mission: To stop the degradation of the planet's natural environment and to build a future in which people live in harmony with nature**



**BY 2050**

*We have a sustainable and healthy planet and we live within planetary boundaries.*

Aligned to SDGs, UNFCCC and CBD - and the New Deal for Nature & People



# FOREST LANDSCAPE RESTORATION IN AFRICA

Together, we can restore forest landscapes on an unprecedented scale for the benefit of people and nature

## AMECEA : ENVIRONMENTAL IMPACT ON INTEGRAL HUMAN DEVELOPMENT

### The Bonn Challenge

Countries involved **61** Pledges made **74**

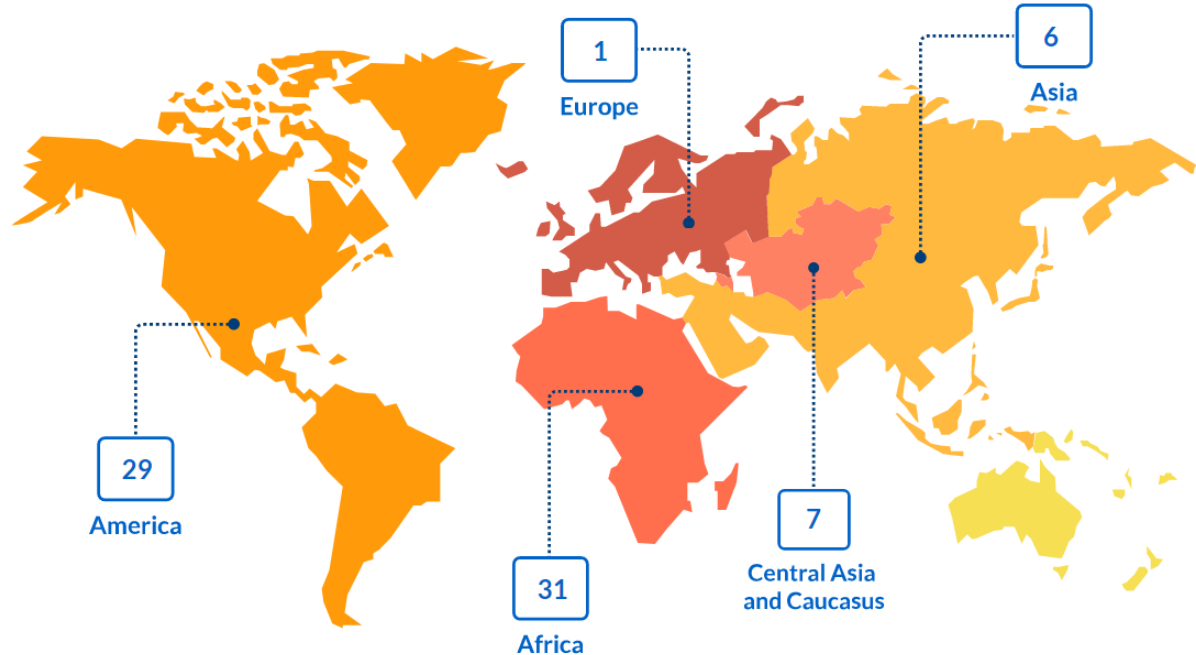


THE GLOBAL PARTNERSHIP ON FOREST AND LANDSCAPE RESTORATION

Supported by:



Federal Ministry for the Environment, Nature Conservation and Nuclear Safety







# FOREST LANDSCAPE RESTORATION IN AFRICA

Together, we can restore forest landscapes on an unprecedented scale for the benefit of people and nature

## AMECEA : ENVIRONMENTAL IMPACT ON INTEGRAL HUMAN DEVELOPMENT

### Continental FLR Initiative – AFR 100

afr100



AFR100 (the African Forest Landscape Restoration Initiative) is a country-led effort to bring 100 million hectares of land in Africa into restoration by 2030.

AFR100 contributes to the Bonn Challenge, the African Resilient Landscapes Initiative (ARLI), the African Union Agenda 2063, the Sustainable Development Goals and other targets. Follow #AFR100

#### COMMITMENT TRACKER



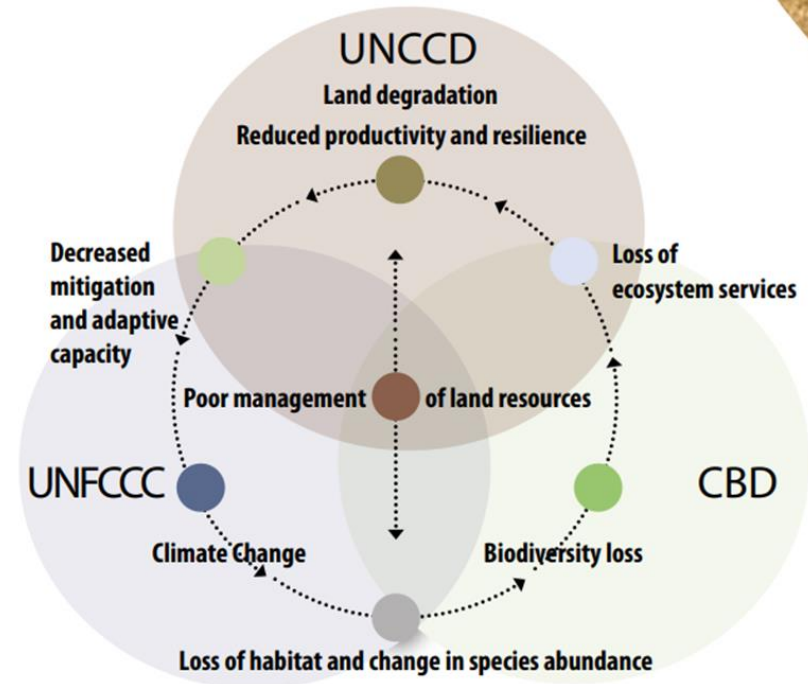


# FOREST LANDSCAPE RESTORATION IN AFRICA

Together, we can restore forest landscapes on an unprecedented scale for the benefit of people and nature

## AMECEA : ENVIRONMENTAL IMPACT ON INTEGRAL HUMAN DEVELOPMENT

The AFR100 Initiative, through FLR approach aims at supporting countries to realize number of international commitments: Conventions, Treaties, Agreements.





# FOREST LANDSCAPE RESTORATION IN AFRICA

Together, we can restore forest landscapes on an unprecedented scale for the benefit of people and nature

## AMECEA: ENVIRONMENTAL IMPACT ON INTEGRAL HUMAN DEVELOPMENT

### Engage stakeholders and support participatory governance

FLR actively engages stakeholders at different scales, including vulnerable groups, in planning and decision making regarding land use, restoration goals and strategies, implementation methods, benefit sharing, monitoring and review processes.

**Focus on landscapes** - FLR takes place within and across entire landscapes, not individual sites, representing mosaics of interacting land uses and management practices under various tenure and governance systems. It is at this scale that ecological, social and economic priorities can be balanced

**Restore multiple functions for multiple benefits** - FLR interventions aim to restore multiple ecological, social and economic functions across a landscape and generate a range of ecosystem goods and services that benefit multiple stakeholder groups.

**Recognize that a suite of interventions are possible.** It embraces a wide range of strategies for restoring trees on the landscape. For instance, some strategies make way for “nature to take its course” (e.g., curtailing livestock grazing to allow trees to spontaneously regrow), while others involve very active human intervention (e.g. trees growing)

**Maintain and enhance natural ecosystems within landscapes** - FLR does not lead to the conversion or destruction of natural forests or other ecosystems. It enhances the conservation, recovery, and sustainable management of forests and other ecosystems

**Tailor to the local context using a variety of approaches** - FLR uses a variety of approaches that are adapted to the local social, cultural, economic and ecological values, needs, and landscape history. It draws on latest science and best practice and traditional and indigenous knowledge, and applies that information in the context of local capacities and existing or new governance structures.

**Manage adaptively for long-term resilience** - FLR seeks to enhance the resilience of the landscape and its stakeholders over the medium and long term. Restoration approaches should enhance species and genetic diversity and be adjusted over time to reflect changes in climate and other environmental conditions, knowledge, capacities, stakeholder needs, and societal values.





# FOREST LANDSCAPE RESTORATION IN AFRICA

Together, we can restore forest landscapes on an unprecedented scale for the benefit of people and nature

## AMECEA : ENVIRONMENTAL IMPACT ON INTEGRAL HUMAN DEVELOPMENT

- Shared vision of landscape
- Conflict resolution
- Effective governance
- Integration of stakeholders

- Promotes economic development
- Reduced economic inequality

- Long-term sustainability and stewardship
- Beneficial outcomes for biodiversity and ecosystem services



- Reduced risk for donors, public agencies, and investors
- Increased cost-effectiveness

- Monitoring outcomes
- Prevents rogue operators
- Replicability and scalability





# FOREST LANDSCAPE RESTORATION IN AFRICA

Together, we can restore forest landscapes on an unprecedented scale for the benefit of people and nature

**AMECEA** : ENVIRONMENTAL IMPACT ON INTEGRAL HUMAN DEVELOPMENT

## WWF's added value:

- To directly support the FLR implementation success in the country through AFR100
- To bring additional and structured capacity
- To promote integration among stakeholders
- To bring our 20 years of experience on FLR implementation on the ground
- To promote the implementation of the FLR principles across the projects
- To support to channel additional funds for FLR
- To bring technology and innovation





# FOREST LANDSCAPE RESTORATION IN AFRICA

Together, we can restore forest landscapes on an unprecedented scale for the benefit of people and nature

**AMECEA** : ENVIRONMENTAL IMPACT ON INTEGRAL HUMAN DEVELOPMENT



## THE POWER OF PARTNERSHIPS

- Global Partner in the UN Decade on Ecosystem Restoration
- Technical partner in AFR100
- FLR Implementation Hub – with IKI, IUCN, WRI
- Trillion Trees with BirdLife International and WCS
- Forests Forward
- Boston Consulting Group



# FOREST LANDSCAPE RESTORATION IN AFRICA

Together, we can restore forest landscapes on an unprecedented scale for the benefit of people and nature



## Strategic partners and collaborators



The Commonwealth



AMECEA Association of Member Episcopal Conferences in Eastern Africa



United Nations Convention to Combat Desertification



AFRICAN DEVELOPMENT BANK GROUP GROUPE DE LA BANQUE AFRICAINE DE DEVELOPPEMENT





# FOREST LANDSCAPE RESTORATION IN AFRICA

Together, we can restore forest landscapes on an unprecedented scale for the benefit of people and nature

A photograph of a group of people in a rural, green landscape. In the foreground, a young girl in a red jacket and floral skirt smiles. Behind her, a woman in a white dress and headwrap stands prominently. Other people are visible in the background, some carrying items. The background shows a lush green field and a dense forest on a hillside.

# THANK YOU

[wwf.panda.org](http://wwf.panda.org)

## **Session 6:**

# **Environmental conservation and restoration agenda: principles and cases**



# FOREST LANDSCAPE RESTORATION IN AFRICA

Together, we can restore forest landscapes on an unprecedented scale for the benefit of people and nature



## Environmental Conservation and Restoration agenda:

### Principles and cases

Severin Kalonga, WWF Lead,  
Forest Landscape Restoration in Africa program  
Tel: +255 715 432 375  
Email: [skalonga@wwftz.org](mailto:skalonga@wwftz.org)

12th July 2022





# FOREST LANDSCAPE RESTORATION IN AFRICA

Together, we can restore forest landscapes on an unprecedented scale for the benefit of people and nature

**AMECEA** : ENVIRONMENTAL IMPACT ON INTEGRAL HUMAN DEVELOPMENT



## FOREST LANDSCAPE RESTORATION IN AFRICA

Together, we can restore forest landscapes on an unprecedented scale for the benefit of people and nature



# FOREST LANDSCAPE RESTORATION IN AFRICA

Together, we can restore forest landscapes on an unprecedented scale for the benefit of people and nature

## AMECEA : ENVIRONMENTAL IMPACT ON INTEGRAL HUMAN DEVELOPMENT

### WHY FOREST LANDSCAPE RESTORATION?

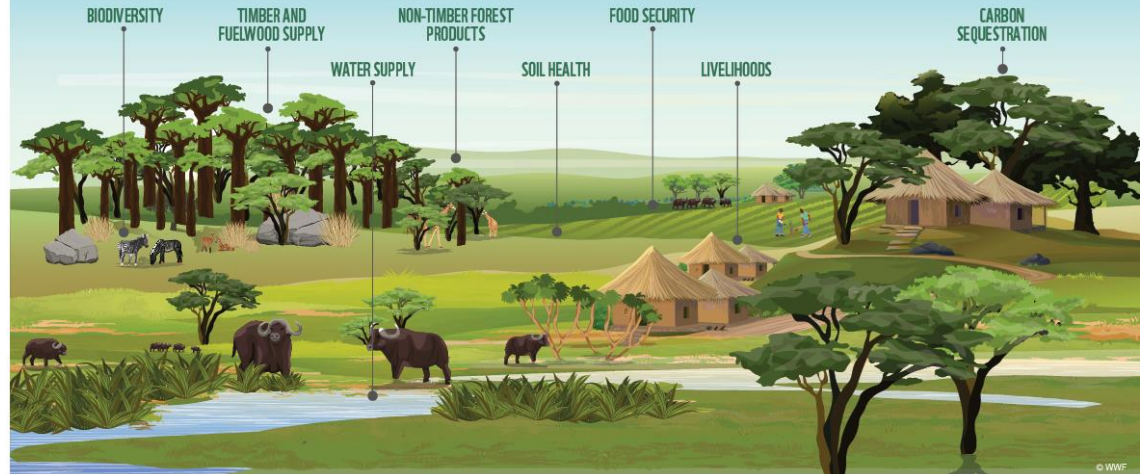


## Forest and landscape restoration (FLR) is the process of

regaining ecological functionality and enhancing human well-being across deforested or degraded forest landscapes.

### WHAT IS FOREST LANDSCAPE RESTORATION?

Forest landscape restoration isn't just about planting trees: it's about restoring ecological functions across whole landscapes and enhancing human well-being across deforested and degraded landscapes, so that people and nature can thrive together.

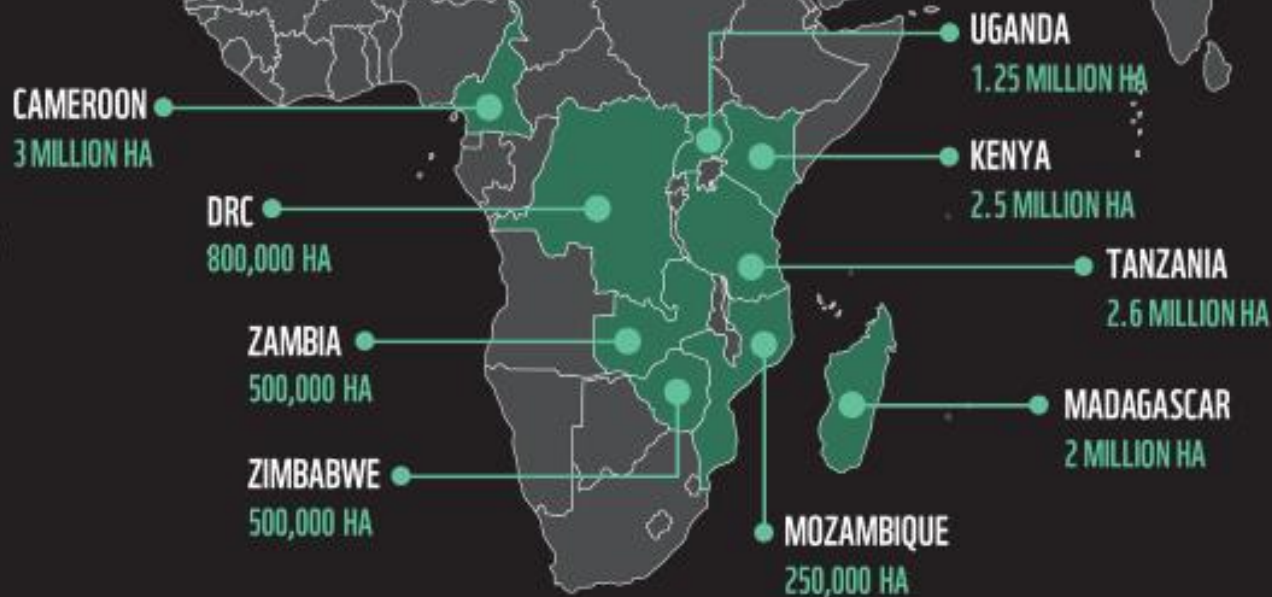


Restoring benefits for People, Nature and Climate



# TIME FOR ACTION

## WWF'S RESTORATION TARGETS BY 2027

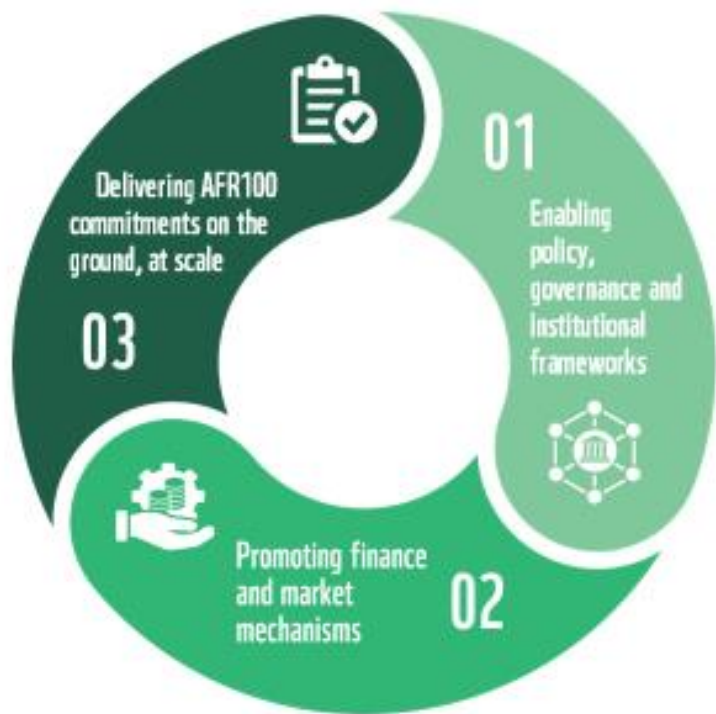






# FOREST LANDSCAPE RESTORATION IN AFRICA

Together, we can restore forest landscapes on an unprecedented scale for the benefit of people and nature



## GOAL

13.5 million hectares under restoration by 2027 for sustainable livelihoods and conservation



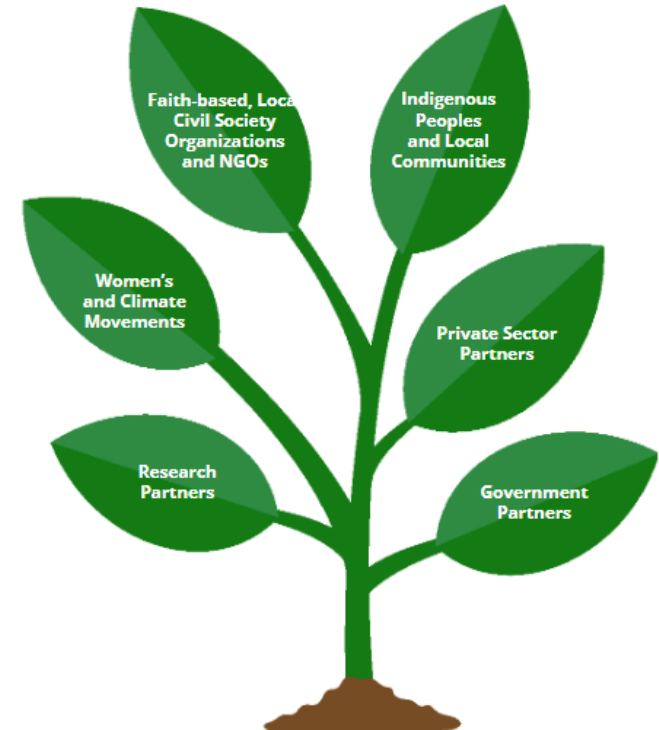
# FOREST LANDSCAPE RESTORATION IN AFRICA

Together, we can restore forest landscapes on an unprecedented scale for the benefit of people and nature

**AMECEA** : ENVIRONMENTAL IMPACT ON INTEGRAL HUMAN DEVELOPMENT

## Climate-Smart Nurseries

- Native species for restoration – trees, plants and crops
- Linked to regional restoration efforts
- Are water efficient
- Link to climate information services
- Biodegradable inputs/outputs
- Create livelihood opportunities for women in green growth economy





# FOREST LANDSCAPE RESTORATION IN AFRICA

Together, we can restore forest landscapes on an unprecedented scale for the benefit of people and nature

WWF **AMECEA** : ENVIRONMENTAL IMPACT ON INTEGRAL HUMAN DEVELOPMENT

## FLR: Strategic Regional Restoration goal

- Rehabilitation of degraded areas + riparian areas
- Planting of indigenous tree species + natural regeneration
- Nursery support
- Expansion of community forests
- FSC certification
- Fire management
- Conservation agriculture
- Establishment of Community Forest Management Groups







# FOREST LANDSCAPE RESTORATION IN AFRICA

Together, we can restore forest landscapes on an unprecedented scale for the benefit of people and nature

WWF **AMECEA** : ENVIRONMENTAL IMPACT ON INTEGRAL HUMAN DEVELOPMENT

## FLR: Strategic National level goal

- TZ pledge on AFR100
- National ROAM
- National FLR strategy and action plan
- FLR CSO platforms
- Natural Resources Benefit Policies
- National FSC standards





# FOREST LANDSCAPE RESTORATION IN AFRICA

Together, we can restore forest landscapes on an unprecedented scale for the benefit of people and nature

WWF **AMECEA** : ENVIRONMENTAL IMPACT ON INTEGRAL HUMAN DEVELOPMENT

## FLR business models

- Bamboo
- Fruit trees
- Devil's claw
- Honey
- Mungongo oil
- Sunflower oil production
- Ecotourism
- FSC-certified timber trade
- Wood carpentry and joinery







# FOREST LANDSCAPE RESTORATION IN AFRICA

Together, we can restore forest landscapes on an unprecedented scale for the benefit of people and nature

## AMECEA : ENVIRONMENTAL IMPACT ON INTEGRAL HUMAN DEVELOPMENT

Site	No. of Seedlings	Area (Ha)
Msalato Secondary School	3,211	3.1
Makutopora Secondary School	9,000	8.1
Chikole Secondary School	1,300	1.2
Ipagala Primary School	265	0.2
College of Rural Planning	529	0.5
University of Dodoma	12,500	12
Medeli	4,350	3.9
Msalato Prison	5,800	5.2
Nyumba 300 Polisi	12,000	30
Medeli Polisi	1,000	2.5
Presidents' Office Medeli Area	14,000	35
Prime Ministers' Residential Area	6,150	10
Kisasa Open Space	560	1.4
Swaswa Swamp	1,157	3
<b>Total</b>	<b>71,782</b>	<b>116.1</b>



Plate 2: Gust of Honor, Dodoma District, Patrick Katambi Planting Tree, during Launching Event at Medeli



### Examples of Tanzania: Greening Tanzania 2020/21





# FOREST LANDSCAPE RESTORATION IN AFRICA

Together, we can restore forest landscapes on an unprecedented scale for the benefit of people and nature

## AMECEA : ENVIRONMENTAL IMPACT ON INTEGRAL HUMAN DEVELOPMENT

- 100 trees were planted at the area that MNH had prepared and these were planted in collaboration with the staff at Mloganzila hospital.
- Several staff members from both WWF Tanzania and Vodacom Tanzania Foundation donated blood.
- More than 40 maternity mothers were visited and given presents from the team.

The activity got a good number of media coverage from Clouds TV/Radio, Star TV, TBC, The Daily news as well as



Plate 4: Staff from Mloganzila Hospital, VTF and WWF participating in tree planting



# FOREST LANDSCAPE RESTORATION IN AFRICA

Together, we can restore forest landscapes on an unprecedented scale for the benefit of people and nature

## AMECEA : ENVIRONMENTAL IMPACT ON INTEGRAL HUMAN DEVELOPMENT



### Achievements: Southern Miombo & Coastal forests

- 500,000 ha under sustainable forest management in Village Land Forest Reserves in 45 villages in Ruvuma Landscape
- Restoration of endangered species (Erythrina spp restoration in Mchakama Village)
- Timber value chain improvement (sawmilling)
- Youth engagement (Nanjirinji school); Earth hour Kazimzumbwi)







# FOREST LANDSCAPE RESTORATION IN AFRICA

Together, we can restore forest landscapes on an unprecedented scale for the benefit of people and nature

## AMECEA : ENVIRONMENTAL IMPACT ON INTEGRAL HUMAN DEVELOPMENT



### Achievements: Restoring Pugu, Vikindu & Kazimzumbwi forests

- WWF – TFS partnership on forest restoration in Pugu-Kazimzumbwi and Vikindu (PVK) with 8,862 ha for over 10 years
- Commemorated Earth Hour event where
  - Over 50,000 trees have been planted
  - Installed solar system at Vikindu forest field office
  - Worked together to promote eco-tourism







# FOREST LANDSCAPE RESTORATION IN AFRICA

Together, we can restore forest landscapes on an unprecedented scale for the benefit of people and nature

**AMECEA** : ENVIRONMENTAL IMPACT ON INTEGRAL HUMAN DEVELOPMENT

## Environmental Education in Kigoma 2022





# FOREST LANDSCAPE RESTORATION IN AFRICA

Together, we can restore forest landscapes on an unprecedented scale for the benefit of people and nature

## AMECEA : ENVIRONMENTAL IMPACT ON INTEGRAL HUMAN DEVELOPMENT

### WWF - Interfaith Engagement



### The Power of Religion

**85%**

of the world population affiliates with a religious or spiritual tradition

**15%**

of the Earth's surface owned/ influenced by faiths

**5%**

Commercial forests owned by faiths

**10%**

Financial institutions owned by faiths

**40%**

Schools run by Faiths

#### Faith Leaders

Are trusted moral guides



#### Millions

of houses of worship, community, youth and media networks







# FOREST LANDSCAPE RESTORATION IN AFRICA

Together, we can restore forest landscapes on an unprecedented scale for the benefit of people and nature

**AMECEA** : ENVIRONMENTAL IMPACT ON INTEGRAL HUMAN DEVELOPMENT

An ethos of caring for the trees **throughout** their growth process, not just at the planting stage, in order to ensure that trees thrive and with them, the environment and the community thrive



Planting seedlings alone is not enough, but proper care and management must be provided so that the trees can grow, bear fruits and produce good seeds

— Rev. Yonas Yigezu Dibisa, President, The Ethiopian Evangelical Church Mekane Yesus





# FOREST LANDSCAPE RESTORATION IN AFRICA

Together, we can restore forest landscapes on an unprecedented scale for the benefit of people and nature

**AMECEA** : ENVIRONMENTAL IMPACT ON INTEGRAL HUMAN DEVELOPMENT

## Examples of Faith Tree and Forest growing

Global religious groups interested in contributing to tree growing efforts globally:

- East Africa and India stand out as key areas of faith tree planting, but is global phenomenon
- 10 million trees planted by faiths in Kenya in last 3 years, mainly Christian groups





# FOREST LANDSCAPE RESTORATION IN AFRICA

Together, we can restore forest landscapes on an unprecedented scale for the benefit of people and nature

**AMECEA** : ENVIRONMENTAL IMPACT ON INTEGRAL HUMAN DEVELOPMENT

**Since 2012, FBOs in Kenya have actively engaged in tree and forest growing:**

Between 2018 and 2021, they reported having grown about 10 million trees in different ecosystems across the country, and working in partnership with other stakeholders.





# FOREST LANDSCAPE RESTORATION IN AFRICA

Together, we can restore forest landscapes on an unprecedented scale for the benefit of people and nature

**AMECEA** : ENVIRONMENTAL IMPACT ON INTEGRAL HUMAN DEVELOPMENT

Joint interfaith tree growing events help build trust and partnerships







# FOREST LANDSCAPE RESTORATION IN AFRICA

Together, we can restore forest landscapes on an unprecedented scale for the benefit of people and nature

**AMECEA** : ENVIRONMENTAL IMPACT ON INTEGRAL HUMAN DEVELOPMENT

## The future of Faith Tree Growing in Kenya

- Green Anglicans in Kenya have pledged to plant **2 million trees** every year from 2021, and targeting 50 million trees by 2026
- Catholic Church in Kenya have pledged to plant **50 million trees** by 2026 in own land and state forests to support government's aspiration to attain 10% forest cover
- Other faith actors have their plans and targets for the future





# FOREST LANDSCAPE RESTORATION IN AFRICA

Together, we can restore forest landscapes on an unprecedented scale for the benefit of people and nature

## AMECEA : ENVIRONMENTAL IMPACT ON INTEGRAL HUMAN DEVELOPMENT

### The Interfaith engagementt in Tanzania

- Capacity building on FLR
- Opportunitites and potential areas of collaboration in the implementation of FLR
- Develop joint work and implementation plan for FLR in the region
  - Tree nursery establishment and
  - Tree/forest growing
- Other faith actors to be engaged at national level via 'National Interfaith Committee' for scaling up FLR implementation







# FOREST LANDSCAPE RESTORATION IN AFRICA

Together, we can restore forest landscapes on an unprecedented scale for the benefit of people and nature

## AMECEA : ENVIRONMENTAL IMPACT ON INTEGRAL HUMAN DEVELOPMENT



We have identified 6 key steps of best practices for tree and forest growing with purpose and permanence: Faiths



© J. Jansen / WWF / IANIGLA



**GUIDELINES FOR FAITHS ON TREE GROWING FOR CONSERVATION & ECOSYSTEM RESTORATION**

Date 2022

Be one with nature







# FOREST LANDSCAPE RESTORATION IN AFRICA

Together, we can restore forest landscapes on an unprecedented scale for the benefit of people and nature

## AMECEA : ENVIRONMENTAL IMPACT ON INTEGRAL HUMAN DEVELOPMENT

### Checklist for tree and forest growing

<b>1. Purpose</b>	providing space for reflection and prayer, growing spiritually significant species, tree species that can provide food for people and/or wildlife, rare or threatened native species, connecting green spaces in urban or rural areas, growing trees for future generations
<b>2. Partnerships</b>	creating opportunities for inter-faith and cross-generational collaboration, learning from experiences within and without, outreach opportunities with community, connecting to technical advisors to realise your purpose and what resources are needed
<b>3. Planning</b>	agree roles and responsibilities in group and broader partnership, define suitable locations, how to secure the trees for the future, use local knowledge with additional technical support to grow at scale and pace.
<b>4. Implementing</b>	successfully sourcing, planting and growing the right trees, in the right place at the right time to achieve your purpose for tree growing
<b>5. Stewardship</b>	caring for your trees as they grow, becoming stewards using local and technical knowledge, monitoring tree growth, evaluating the success of your tree growing plans and sharing benefits
<b>6. Sharing</b>	knowledge, experience and results of your tree growing efforts, challenges and how you have overcome them, connecting to promote #generationrestoration

## 6 Key Steps for Best Practice





# FOREST LANDSCAPE RESTORATION IN AFRICA

Together, we can restore forest landscapes on an unprecedented scale for the benefit of people and nature

**AMECEA** : ENVIRONMENTAL IMPACT ON INTEGRAL HUMAN DEVELOPMENT



[Faith Plans](#): For people and planet. Take action today for future generations

Please find Guidelines and contact information on the FaithPlans website:  
[www.faithplans.org](http://www.faithplans.org)

FNH Faith Tree Growing portal coming soon. We will send an email update. And write to us at [info@faithnaturehub.org](mailto:info@faithnaturehub.org)

[Home](#) [Faiths](#) [Conservation](#) [Resources](#) [Account](#) [About](#)

Welcome to the Faith & Nature Hub

[Introduction to Faith Plans](#)



Thank you